

Copper Cabling Solutions

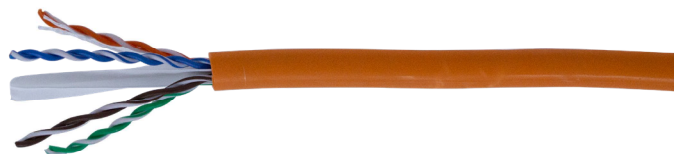
Category 6 U/UTP B2ca Solid Cable



Category 6 Unshielded Twisted Pair Cable is designed for use in next generation data communications networks, and will comfortably support present applications including Gigabit Ethernet. The B2ca LSZH sheath offers excellent fire performance making this the ideal choice in public buildings and other high risk locations. Connectix Category 6 UTP Solid Cable offers the performance characteristics required by the ever-present Category 6 Standard. Exceeds the requirements of BS6701:2016+A1:2017 for installation cables.

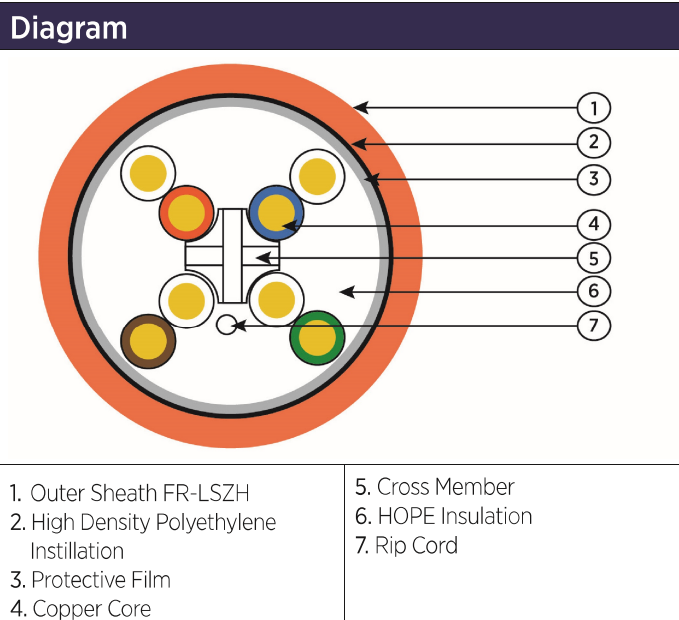
Features & Benefits

- Suitable for Gigabit Ethernet applications
- Supplied metre marked for easy installation
- Excellent performance exceeding ANSI/TIA Enhanced Category 6 specifications
- 305m supplied in an easy pull boxes
- In line with BS6701:2016+A1:2017 specifications
- 25 Year System Warranty Available



Electrical Specifications				
DC Resistance Unbalance	Max 2.5%			
Insulation Resistance	>5000m Ω *km			
Capacitance Unbalance (pair to ground)	330 (pF/100m)			
Characteristic Impedance @1-250 MHz	100 +/- 15 Ω			
Velocity Ratio	69%			
Operating Temperature Range	-20 °C to +70 °C			
Installation Temperature Range	0 °C to +50 °C			
Transfer Impedance (m Ω /m)	1 MHz	10 MHz	30 MHz	100MHz

Product Specifications	
Conforms to	IEEE 802.3: 10Base-T, 100Base-T, 1000 Base-T standards; ANSI/TIA 568C; ISO/IEC 11801; RoHS2002/95/EC CENELEC EN 50773
Fire Rating	B2ca,s1a,d0,a1
Inner Conductor	23 AWG plain copper
Insulation	High density polyethylene
Construction	4 twisted pairs cabled together with spine
Colour Code	Pair 1: White/Blue-Blue/White Pair 2: White/Orange-Orange/White Pair 3: White/Green-Green/White Pair 4: White/Brown-Brown/White
Sheath	FR-LSZH
RAL Colour	Orange - 2004
Overall Diameter	6.1+/- 0.3 mm
Min. Bending Radius	24.5 mm



Ordering Information	
Description	Part Number
Connectix Cat 6 U/UTP B2ca Orange LSZH Cable - 305m Box	001-003-005-68